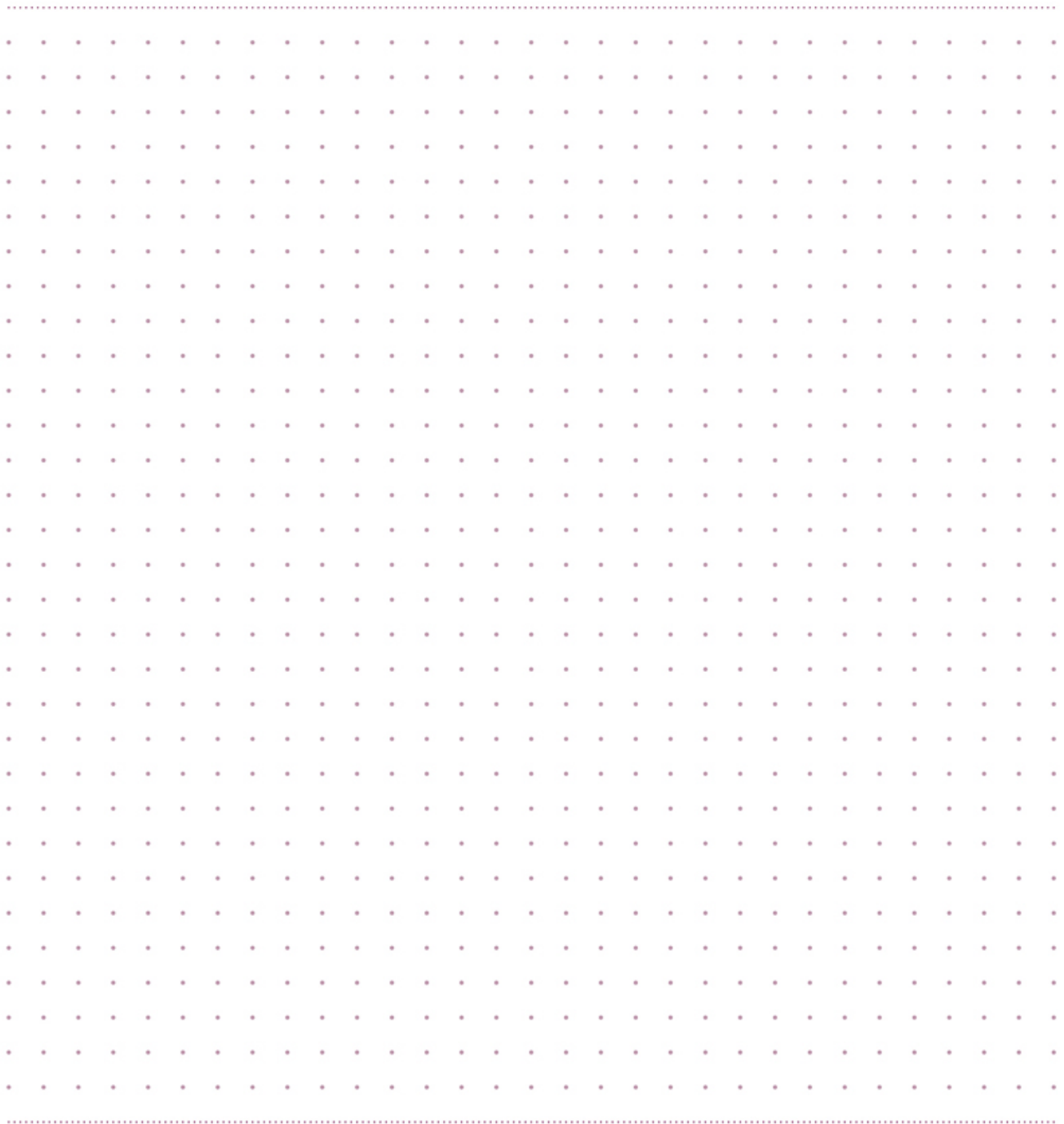


# Ubuntu Server Certified Hardware Self-Testing Guide



# Contents

|  |           |
|--|-----------|
| <b>Introduction</b>  | <b>4</b>  |
| <b>Glossary</b>  | <b>4</b>  |
| <b>Understanding the Certification Process</b>                   | <b>6</b>  |
| <b>Creating a Hardware Entry on C3</b>                           | <b>8</b>  |
| <b>Preparing the Test Environment</b>                            | <b>11</b> |
| Ensuring Equipment is Ready                                      | 11        |
| Configuring the SUT for Testing                                  | 12        |
| Preparing the Network Test Environment                           | 14        |
| <b>Setting up the SUT for Testing</b>                            | <b>16</b> |
| Installing Ubuntu on the System                                  | 16        |
| Configuring DCPMM Devices for Testing                            | 19        |
| Performing Final Pre-Testing SUT Configuration                   | 21        |
| <b>Setting Up the iperf3 Server</b>                              | <b>22</b> |
| <b>Running the Certification Tests</b>                           | <b>24</b> |
| <b>Performing ISO Install Tests</b>                              | <b>30</b> |
| <b>Manually Uploading Test Results to the Certification Site</b> | <b>33</b> |
| <b>Requesting a Certificate</b>                                  | <b>34</b> |
| <b>Appendix A - Installing the Server Test Suite Manually</b>    | <b>36</b> |
| <b>Appendix B - Re-Testing and Installing Updated Tests</b>      | <b>37</b> |
| Running a Limited Test Script                                    | 37        |
| Installing and Running Updated Tests                             | 38        |
| <b>Appendix C - Testing Point Releases</b>                       | <b>40</b> |
| <b>Appendix D - Network Performance Tuning</b>                   | <b>41</b> |
| Improving High-Speed Network Performance                         | 41        |
| Disabling Energy Efficient Ethernet Settings                     | 42        |

|  |           |
|--|-----------|
| <b>Appendix E - Troubleshooting</b>                | <b>44</b> |
| Fixing Deployment Problems                         | 44        |
| Adding PPAs Manually                               | 44        |
| Submitting Results                                 | 45        |
| Resolving Network Problems                         | 45        |
| Fixing Virtualization Test Problems                | 46        |
| Handling Secure Boot MOKs                          | 47        |
| Handling Miscellaneous Issues During Testing       | 47        |
| <b>Appendix F - Using SoL</b>                      | <b>48</b> |
| Setting Firmware Options                           | 48        |
| Setting Kernel Options                             | 48        |
| Remotely Accessing a Server's Console              | 50        |
| <b>Appendix G - Setting Up and Testing a GPGPU</b> | <b>52</b> |
| Requirements for GPGPU testing                     | 52        |
| Setting Up a GPGPU for Testing                     | 52        |
| GPGPUs that use NVLink                             | 53        |
| Testing the GPGPU(s)                               | 54        |

## Introduction

The aim of this document is to provide the information needed to test a server on-site using the Canonical Server Test Suite and then submit the results of that testing to Canonical to meet the requirements for Server Hardware Certification. Testing may be done with or without an Internet connection.

## Glossary

The following definitions apply to terms used in this document.

### **Blocking test**

A test that *must* pass for the SUT to be granted a certified status.

### **BMC**

Baseboard Management Controller — A device in many server models that enables remote in- and out-of-band management of hardware.

### **CSM**

Compatibility Support Module — A feature of many UEFI implementations that enables the machine to boot using older BIOS-mode boot loaders.

### **DCPMM or NVDIMM**

Intel Optane Datacenter Persistent Memory Module — A specialized RAM device introduced with Cascade Lake that can be configured to provide a block device that sits on the Memory Bus. Generically these are called NVDIMM or Non-Volatile Dual In-line Memory Module.

### **DHCP**

Dynamic Host Control Protocol — A method for providing IP addresses to the SUT and Targets.

### **IPMI**

Intelligent Platform Management Interface — A BMC technology for remotely connecting to a computer to perform management functions.

### **KVM (Meaning 1)**

Kernel Virtual Machine — A system for running virtual machines on Ubuntu Server.

**KVM (Meaning 2)**

Keyboard/Video/Mouse — A device for sharing a keyboard, mouse, and monitor between multiple computers, sometimes over a network; or a BMC feature to enable remote access to a computer's console.

**LAN**

Local Area Network — The network to which your SUT and Targets are connected. The LAN does not need to be Internet accessible (though that is preferable if possible).

**MAAS**

Metal as a Service — A Canonical product for provisioning systems quickly and easily.

**Non-blocking test**

A test that must be performed but will not affect the granting of a certified status.

**PXE**

Pre-boot Execution Environment — A technology that enables you to boot a computer using remote images for easy deployment or network-based installation.

**RAID**

Redundant Array of Independent Disks - Multi-disk storage providing redundancy, parity checking, and data integrity.

**SAN**

Storage Area Network — Usually FibreChannel.

**Secure ID (SID)**

A string that uniquely identifies computers on the certification site, `certification.canonical.com`.

**SUT**

System Under Test — The machine you are testing for certification.

**Target**

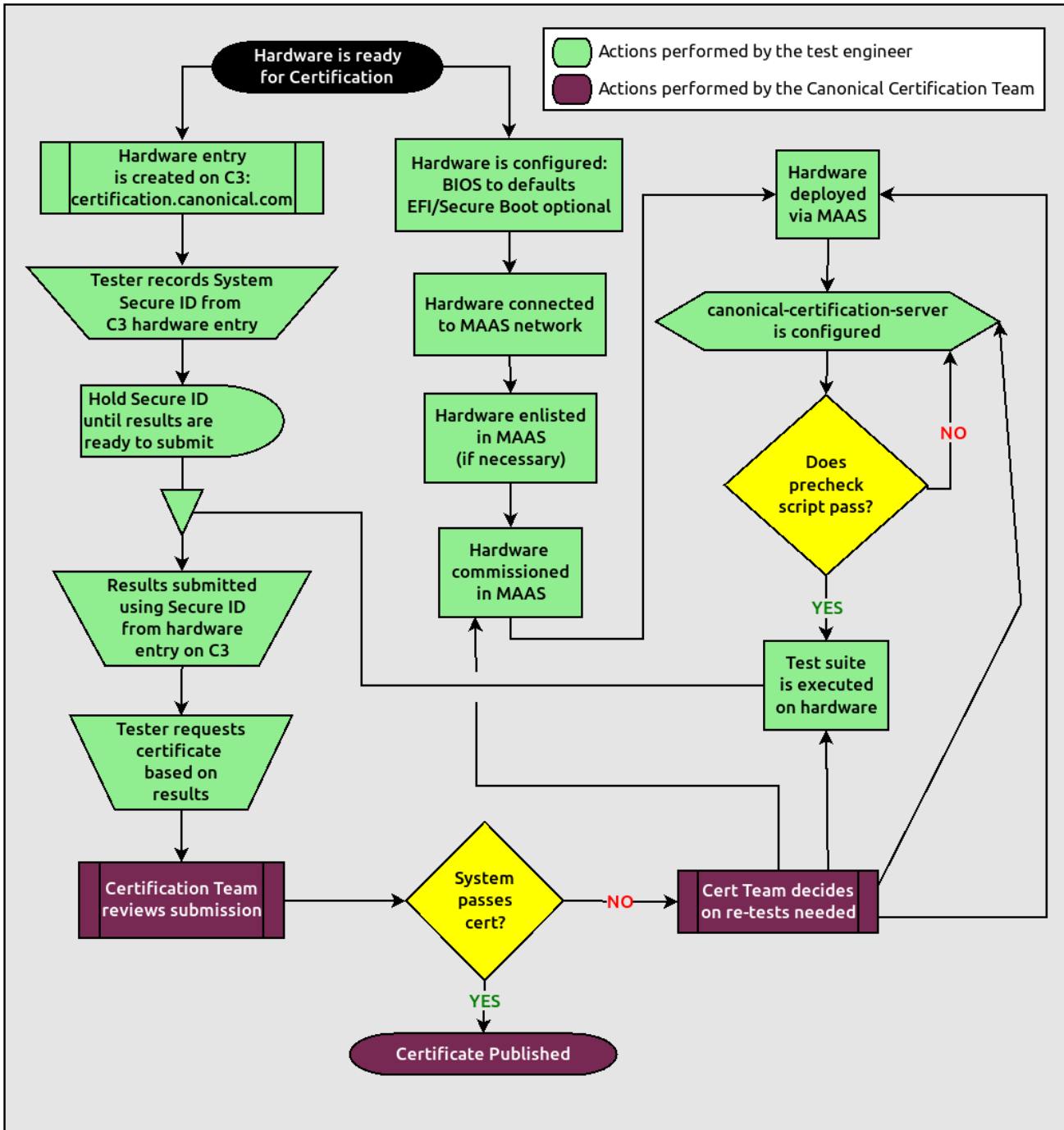
A computer on the test LAN that the SUT can use for network testing. The Target must be running an `iperf3` server, but otherwise does not need any special configuration. The MAAS server may double as the Target.

**Test case**

A test to be executed as part of the certification test suite. Test cases include things such as "stress test of system memory" and "test the CPU for clock jitter."

## Understanding the Certification Process

The workflow for testing SUTs is described in detail in the rest of this document. An overview is presented in the following flowchart:



The highlights of this process are:

1. Set up your MAAS server and connect it to the test LAN. This process is covered in the MANIACS document (available from <https://certification.canonical.com>).
2. Create an entry on <https://certification.canonical.com> (C3 for short) for the SUT, as described in more detail shortly, in [Creating a Hardware Entry on C3](#). If an entry already exists for your specific configuration (not just the model), you should use the existing entry.
3. Use MAAS to deploy the SUT, as described in the upcoming section, [Installing Ubuntu on the System](#).
4. Check the SUT's configuration. (The `canonical-certification-precheck` script, described in [Running the Certification Tests](#), is key to this check.)
5. Run the test suite on the SUT, as described in [Running the Certification Tests and Performing ISO Install Tests](#).
6. Submit the test results to C3. This may be done semi-automatically when running the tests, or can be done manually, as described in [Manually Uploading Test Results to the Certification Site](#).
7. If desired, you can request a certificate, as described in [Requesting a Certificate](#).

## Creating a Hardware Entry on C3

You can run certification tests without submitting them to C3; however, if you want to certify the system, you need a C3 account. *If you do not have an account for your company on the private certification web site, or if you do not have access to your company's account, please contact your Partner Engineer, who will work with the Server Certification Team to establish the account.*

Additionally, anyone who needs to access the account on C3 will need their own account on `launchpad.net`, and their Launchpad account will need to be added to the Access Control List for the company account. You can create a Launchpad account at <http://launchpad.net/+login>. *If, after the Launchpad account is created and you have been added to the ACL, you still can not see the Account Information on C3, try logging out of C3, clearing any browser cache and cookies, and logging back into C3.*



In order to upload test results to C3, you need to create a hardware entry for the system which you will be certifying; however, creating a new entry is not always necessary. You *should* create an entry if:

- A C3 entry for that specific machine (model and configuration) does not already exist; *and*
- You plan to submit certification data for that machine.

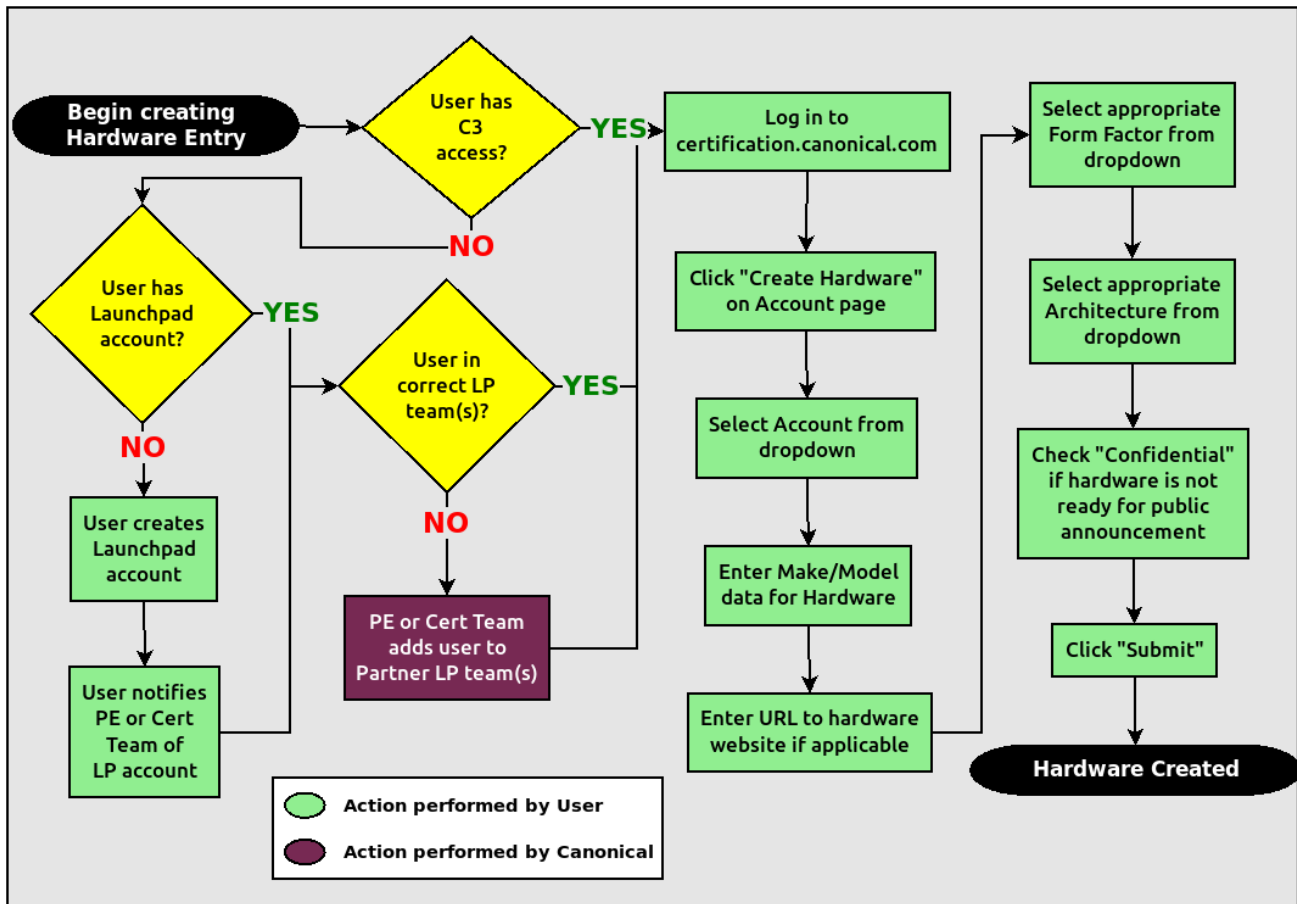
You should *not* create a new entry if:

- C3 already hosts an entry for that specific machine; instead, use the existing entry, even if it has existing submissions associated with it (say, for an earlier version of Ubuntu); *or*
- You don't plan to submit certification data for this computer.

You can put off creating the C3 entry until after the test, although doing it before testing is usually preferable. To create an entry you can go directly to:

<https://certification.canonical.com/hardware/create-system>

If you have problems accessing this site, contact your assigned Partner Engineer.



The process of creating an entry is outlined in the preceding flowchart. When creating an entry, you must enter assorted pieces of information:

1. Fill in the details:

- **Account** — The name of your account. If the account is incorrect or can't be set, please contact your account manager for assistance. This field is never published; it is for internal use only.
- **Make** — The manufacturer of the system, e.g. Dell, HPE, as you would like it to appear on the public web site.
- **Model** — The name of the system itself, e.g PowerEdge R750 or ProLiant DL380 Gen10, as you would like it to appear on the public web site.

- **Codename** — This is for your internal reference and identifies the internal code name associated with the SUT. This data is *never* published and is visible only to you and to Canonical.
- **Web site** — This optional field links to the system information on the manufacturer’s web site. This field is not currently published publicly.
- **Comment** — This optional field holds any comment you want to make about the hardware, including things like tester name, test location, etc. These comments are never made public, they are for internal use only.
- **Form factor** — The type of system: Laptop, Server, etc. This is not published directly, but determines where your system is displayed on the public site. Client form factors appear in one place while server form factors appear elsewhere on the public certification site. You may select any appropriate Server form factor for the SUT except for Server SoC, which is reserved for System on Chip certifications.
- **Architecture** — The CPU architecture of the SUT. This is used internally and is not published.
- **Confidential** — Defaults to False (unchecked). Check the box if the system has not been publicly announced yet or should remain unpublished for any reason. This will cause the entire entry to *not* be published to the public web site.

2. Click Submit.

3. Note the “Secure ID for testing purposes” value. You’ll need this when submitting the test results. (Note that this value is unique for each machine.)

## Preparing the Test Environment

Before you test the hardware, you must perform some initial setup steps. These steps are preparing ancillary hardware, configuring the SUT for testing, and configuring the test network.

### Ensuring Equipment is Ready

The requirements for running the tests for a server are minimal. Ensure that you have:

- Writable USB sticks with enough free space (> 256 MB). Each stick must contain a *single partition* with a *writable FAT* filesystem on it. Note that a USB stick with

multiple partitions may cause problems, so if necessary you should repartition your device to have a single partition. Modern computers typically provide both USB 2 and USB 3 ports, but we require testing of only the fastest USB device — normally the USB 3 port. If you need to test more than one computer then *bring enough USB sticks to test all the systems*.

- Writable SD cards configured with the same rules as the USB sticks. These SD cards are needed only on those (rare) servers that have external SD card slots.
- A computer to function as an `iperf3` Target on the test LAN. This computer must have network ports that equal or exceed the speed of the fastest network port on your SUTs.
- A computer to function as a MAAS server on the test LAN. This server will provision the SUT. (Note that a MAAS server for certification testing should ideally be configured to automatically install the Server Test Suite on the SUT, which will not be the case for a “generic” MAAS server.)

Frequently, the MAAS server and `iperf3` Target are one and the same computer; however, sometimes it is desirable to use two computers for these two purposes. The upcoming section, [Preparing the Network Test Environment](#), covers these servers in more detail.

## Configuring the SUT for Testing

The following should be considered the minimum requirements for setting up the SUT and test environment:

- Minimum loadout
  - Minimum of 4 GiB RAM
  - 1 internal storage device (HDD, SSD, or NVMe); 2 with minimal RAID
  - 1 CPU of a supported type
- Recommended (preferred) loadout
  - Maximum supported number of internal storage devices, especially if you can configure multiple RAID levels (e.g. 2 for RAID 0, 3 for RAID 5, and 6 for RAID 50)
  - The largest disk capacity available from the OEM — ideally, over 2 TiB on a single disk or RAID array
  - Maximum amount of supported RAM
  - Maximum number of supported CPUs

- If the SUT has multiple disk controllers (such as a motherboard-based disk controller and a separate RAID controller), we strongly recommend that disk devices be connected to all controllers during testing.
- All hardware, including CPUs, must be production level. Development level hardware is not eligible for certification.
  - This can be excepted on a case by case basis for pre-release systems where the Partner and Canonical have arranged certification to be published coinciding with a SUT's release announcement.
- If possible, as many processors as the SUT will support should be installed.
  - Note that systems that ship with processors from different families (e.g., Coffee Lake vs. Cascade Lake) will require extra testing.
  - CPU speed bumps and die shrinks do not require extra testing.
- The SUT should not contain any extraneous PCI devices that are not part of the certification.
  - This includes things like network, SAN and iSCSI cards.
  - Hardware RAID cards are allowed if they are used to provide RAID services to the SUT's onboard storage.
- Virtualization (VMX/SVM) should be enabled in the BIOS/UEFI, when supported by the CPU's architecture.
- The SUT should be running release or GA level (*not* development level) firmware. Development level firmware is generally not eligible for certification.
  - The one exception to this rule is that you may use unsigned GA equivalent firmware if such allows you to flash the system up and down rev as needed. However, the test results must show the version to be equal to the publicly available version.
- BIOS/UEFI should be configured using factory default settings, with the following exceptions:
  - Many systems ship with **IPMI-over-LAN** disabled by default. This will need to be enabled to ensure MAAS can remotely manage the SUT.
  - If the hardware virtualization options in the BIOS/UEFI are not enabled, enable them, save the settings and allow the SUT to reboot.

- The SUT must be configured so that at least ONE network device is set to PXE-boot by default.
- If the SUT's firmware supports PXE-booting in UEFI mode, it must be configured to boot in UEFI mode, rather than in BIOS/CSM/legacy mode.
- All non-network devices have been removed from the Boot Options so that Network Booting (PXE) is the only option. The Ubuntu installer will add an Ubuntu menu option and that is OK, but testing expects the Network Boot device is the first item in the boot menu.
  - On systems where it is impossible to remove non-network boot options, please ensure that the Network Booting option is the first (default) boot option so that the machine ALWAYS boots from network first.
- The SUT Firmware should have verifiable identifiers in DMI Types 1, 2 and/or 3 that match the information entered in the hardware entry on C3.
  - For ODMs this means Make and Model data must be accurate in DMI Types 1 and 2.
  - For OEMs where Make and Model may not be determined yet, some other identifier must exist in DMI Types 1, 2 and/or 3 that matches data provided in the Hardware Entry on C3
- Storage should be properly configured.
  - Disks must be configured for "flat" storage — that is, filesystems in plain partitions, rather than using LVM or bcache configurations. Similarly, software RAID must *not* be used.
- The SUT's BMC, if present, may be configured via DHCP or with a static IP address. If the BMC uses IPMI, MAAS will set up its own BMC user account (`maas`) when enlisting the SUT.
- A monitor and keyboard for the SUT are helpful because they will enable you to monitor its activities. If necessary, however, certification can be done without these items.

## Preparing the Network Test Environment

Particularly if you're testing in a location where you've never before tested, or if you're testing a SUT with unique network hardware, you may need to prepare the network environment. In particular, you should pay attention to the following:

- In addition to the SUT, the network must contain at least one other machine, which will run MAAS and an `iperf3` server; however, you may want to separate these two functions.
  - The MAAS Advanced Network Installation and Configuration — Scripted (MANIACS) document (available from <https://certification.canonical.com>) describes how to configure a MAAS server. The MAAS server computer itself does not need to be very powerful by modern standards. MAAS version 3.1 or later is required for certification work.
  - When testing multiple SUTs simultaneously, you will need multiple `iperf3` Targets, one for each SUT. If your `iperf3` Target has a sufficiently fast NIC or multiple NICs, you can assign the computer multiple IP addresses and treat each one as a distinct Target. This topic is covered in more detail in Appendix B of the MANIACS document. Alternatively, you can run network tests against a single `iperf3` Target sequentially; however, this approach complicates submission of results. Note that poor network infrastructure may make multiple simultaneous `iperf3` runs unreliable.
- Ideally, the network should have few or no other computers; extraneous network traffic can negatively impact the network tests.
- The network should have no DHCP or TFTP servers, other than the one provided by MAAS.
- Network cabling, switches, and the `iperf3` server should be capable of at least the SUT's best speed. For instance, if the SUT has 100 Gbps Ethernet, the other network components should be capable of 100 Gbps or faster speeds. If the local network used for testing is less capable than the best network interfaces on the SUT, the network test won't run, and those interfaces must be tested later on a more-capable network. If the test environment uses separate networks with different speeds, with the SUT cabled to multiple networks via different ports, you can specify multiple `iperf3` servers, as described later.
- If desired, the MAAS server may be run inside a virtual machine; however, it is advisable to run the `iperf3` server on "real" hardware so as to minimize the risk of network tests failing because of virtualization issues.
- Every network port must be cabled to the LAN and properly configured with either DHCP or static addressing. If a SUT has 4 NIC ports, then all 4 must be connected to the LAN.

## Setting up the SUT for Testing

Before you can begin testing, you must install Ubuntu on the SUT and perform some certification-specific configuration tasks on the SUT. Most of the work of these tasks is performed with the help of MAAS, as described in the following sections.

### Installing Ubuntu on the System

Server certification requires that the SUT be installable via MAAS. Therefore, the following procedure assumes the presence of a properly-configured MAAS server. The MAAS Advanced Network Installation and Configuration — Scripted (MANIACS) document describes how to set up a MAAS server for certification testing purposes. This document describes use of MAAS 3.1.

Once the SUT and MAAS server are both connected to the network, you can install Ubuntu on the SUT as follows:

1. Power on the SUT and allow it to PXE-boot.
  - The SUT should boot the MAAS enlistment image and then power off.
  - You should see the SUT appear as a newly-enlisted computer in your MAAS server's node list. (You may need to refresh your browser to see the new entry.)
  - MAAS 2.6 and later may attempt to commission the node immediately after enlisting it, thus skipping the next two steps. If this does not happen or if you want to change the node's name, you can perform the next two steps manually after the commissioning attempt.
2. Check and verify the following items in the MAAS server's node details page:
  - If desired, change the node name for the SUT.
  - Check the SUT's power type and ensure it's set correctly (IPMI, AMT, etc.). If the SUT has no BMC, you can set it to Manual.
  - Note that manual power control is acceptable only on low-end servers that lack BMCs. If MAAS fails to detect a BMC that is present or if MAAS cannot control a BMC that is present, please consult the Canonical Server Certification Team.
3. Commission the node by clicking Take Action followed by Commission and then Start Commissioning for Machine.



- On some systems, it is necessary to remove the `smartctl-validate` option under Testing Scripts before clicking Commission Machine.
  - If the SUT has a BMC, the computer should power up, pass more information about itself to the MAAS server, and then power down again.
  - If the SUT does not have a BMC, you should manually power on the SUT after clicking the Start Commissioning for Machine button. The SUT should power up, pass more information about itself to the MAAS server, and then power down again.
  - Some servers provide an option called “minimum password change interval,” or something similar, in their BMCs’ web-based interfaces, that prevents BMC passwords from being changed very frequently. MAAS will attempt to change the password upon commissioning, though, and if this is done immediately after enlisting the node, it will fail. If the BMC configuration commissioning step fails, you may need to set this minimum password change interval to 0 or otherwise disable this feature, then try commissioning again. Alternatively, checking the “Skip configuring supported BMC controllers with a MAAS generated username and password” option when commissioning the node may work around this problem.
4. Check and, if necessary, adjust the following node details:
- On the Network tab, ensure that all the node’s interfaces are active. (By default, MAAS activates only the first network interface on most computers.) If an interface is identified as *Unconfigured*, click the down arrow in the Actions column, select Edit Physical, and set IP Mode to Auto Assign, DHCP, or Static Assign. (The first two cause MAAS to assign an IP address to the node itself, either by maintaining its own list of static IP addresses or by using DHCP. The Static Assign option requires you to set the IP address yourself. These three options are described in more detail in the MANIACS document, available from <https://certification.canonical.com>.) When you’ve made this change, click Save Interface.
  - On the Storage tab, look under Available Disks and Partitions for disks that have not been configured. If any are available, click the down arrow in the Actions column and select Add Partition. You can then set a Filesystem (specify ext4) and Mount Point (something under `/mnt` works well, such as `/mnt/sdb` for

the `/dev/sdb` disk). Click Add Partition when you've set these options. Repeat this step for any additional disks.

- If MAAS complains that there's insufficient free space on the device, try manually reducing the partition's size by a small amount. Usually rounding down to the nearest whole number works around this problem.
5. On the MAAS server, verify that the SUT's Status is listed as Ready in the node list or on the node's details page. You may need to refresh the page to see the status update.
  6. Click Take Action followed by Deploy. Options to select the OS version to deploy should appear.
  7. Select the Ubuntu release you want to deploy:
    - Choose the Ubuntu version you wish to deploy from the list of available Ubuntu releases. The options will appear similar to **22.04 LTS "Jammy Jellyfish"** in the middle drop-down box.
    - Choose the kernel you wish to deploy. The available kernels are in the dropdown box below the Ubuntu version. For recent versions of Ubuntu, they will be named similar to **jammy (ga-22.04)**.
      - When deploying the SUT for testing, you should always start out with the original GA kernel. For 22.04 LTS, the **jammy (ga-22.04)** option is appropriate. If the system is not deployable or fails certification using the GA kernel, you will then need to re-deploy the SUT choosing the correct HWE kernel option (if available). Note that an HWE kernel option becomes available only starting with the second point release for an LTS version, such as 20.04.2 or 22.04.2.
      - Do not choose any of the **edge** or **lowlatency** kernel options for official Certification testing.

Appendix C - Testing Point Releases, elaborates on the procedures for testing different kernels and point releases.

8. Click Deploy Machine to begin deployment.
  - If the SUT has a BMC, it should power up and install Ubuntu. This process can take several minutes.

- If the SUT does not have a BMC, you should power it on manually after clicking Deploy Machine. The SUT should then boot and install Ubuntu. This process can take several minutes.

If MAAS has problems in any of the preceding steps, you should first check Appendix E - Troubleshooting for suggestions. If that doesn't help, the SUT might not pass certification. For instance, certification requires that MAAS be able to detect the SUT and, in most cases, set its power type information automatically. If you have problems with any of these steps, contact the Canonical Server Certification Team to learn how to proceed; you might have run into a simple misconfiguration, or the server might need enablement work.

If MAAS is fully configured as described in the *MAAS Advanced Network Installation and Configuration — Scripted (MANIACS)* document, it should deploy the Server Test Suite automatically. If MAAS doesn't deploy the Server Test Suite properly, you can do so manually, as described in Appendix A - Installing the Server Test Suite Manually.

## Configuring DCPMM Devices for Testing

Starting with Cascade Lake, Intel servers have included support for Intel Optane DCPMM devices. These are RAM devices that use the standard DIMM form factor and are populated alongside standard DIMMs. These special devices can function in one of three different modes, described below.

- **Memory Mode** is a configuration where the DCPMMs are dedicated completely to the traditional volatile RAM role, like any other standard memory DIMM. In this mode, the certification suite will exercise the DCPMMs using the Memory test cases.
- **AppDirect Mode** is a configuration where the DCPMMs are presented to the installed OS as persistent storage devices. AppDirect allows for four different storage modes, three of which are currently tested using the Disk test cases:
  - **fsdax** — Filesystem-DAX mode is the default mode of a namespace when specifying `ndctl create-namespace` with no options. It creates a block device (`/dev/pmemX[.Y]`) that supports the DAX capabilities of Linux filesystems (XFS and ext4 to date). DAX enables workloads or working-sets that would exceed the capacity of the page cache to scale up to the capacity of persistent memory. When in doubt, pick this mode.
  - **sector** — Use this mode to host legacy filesystems that do not checksum metadata or applications that are not prepared for torn sectors after a crash.

Expected usage for this mode is for small boot volumes. This mode is compatible with other operating systems.

- **raw** — Raw mode is effectively just a memory disk that does not support DAX. Typically this indicates a namespace that was created by tooling or another operating system that did not know how to create a Linux `fsdax` or `devdax` mode namespace. This mode is compatible with other operating systems, but again, does not support DAX operation.
- **devdax** — Device-DAX mode enables similar `mmap(2)` DAX mapping capabilities as Filesystem-DAX. However, instead of a block device that can support a DAX-enabled filesystem, this mode emits a single character device file (`/dev/daxX.Y`). Use this mode to assign persistent memory to a virtual machine, register persistent memory for RDMA, or when gigantic mappings are needed. *As of this writing, devdax is not yet supported by tests in Checkbox*
- **Mixed Mode** enables configuring a mix of both Memory and AppDirect spaces using either the system configuration tools (e.g. Setup/BIOS) or userspace tools after installation, which requires a reboot afterwards. If using userspace tools, you will need to use `ipmctl` for the initial configuration. `ipmctl` is available via the Universe repo in 20.04 LTS and later. Using `ipmctl` you should allocate at least 25% of the DCPMM space to Memory Mode and the remainder as AppDirect Mode.

This guide provides one path to configuration using Mixed Mode to reduce the amount of retests necessary to complete certification. Some OEMs may support operation of DCPMMs in Memory or AppDirect only. If that applies to your SUT, you will need to configure each mode separately and run retests to ensure both modes have been tested.

Once initial configuration is done using `ipmctl`, you will need to use `ndctl`, which is available from 18.04 LTS onward in the Universe repo, to do the final configuration.

For this step, you should create a `fsdax` device, a sector device, and a raw device of more or less equal size.

Once you have configured this, you will need to reboot the SUT to ensure the configuration is performed. Once you have rebooted the server, you will need to add a partition table and a partition to each AppDirect device, and format them appropriately using a supported filesystem (such as `ext4`).

From this point onward, the Server Test Suite will treat the AppDirect devices as any other block device and test them accordingly using the various Disk test cases.

## Performing Final Pre-Testing SUT Configuration

Once the SUT is deployed, you should be able to log into it using SSH from the MAAS server. Check the node details page to learn its primary IP address. (Using a hostname will also work if DNS is properly configured, but this can be fragile.) The username on the node is `ubuntu`, and no password should be required when logging in from the MAAS server or from any other computer and account whose SSH key you've registered with the MAAS server.

You may need to perform a few additional minor tasks before running the Certification Suite, and keep some other factors in mind as you continue to access the SUT:

- If you want to log in at the console or from another computer, the password is `ubuntu`, assuming the certification preseed files are used on the MAAS server. If you're using a "generic" MAAS installation, you must set the password manually. Testing at the console has certain advantages (described shortly).
- You should *not* install updates to the SUT unless they are absolutely necessary to pass certification. In that case, the Canonical Certification Team will make the determination of what updates should be applied.
- You should verify your SUT's kernel version by typing `uname -r`. Ubuntu 20.04 GA ships with a 5.4.0-series kernel and Ubuntu 22.04 ships with a 5.15-series kernel. Note that, although updated kernels ship with most point-release versions, if you use the standard MAAS images, `lsb_release -a` will show that you have the latest point-release version even if you're using the GA kernel. It's the kernel version that's important for testing purposes, as elaborated on in Appendix C - Testing Point Releases.
- If any network interfaces are not configured, you should configure them:
  - The best way is to release the node in MAAS, adjust the network configuration as described in *Installing Ubuntu on the System*, and re-deploy the node. If the interfaces don't show up in MAAS, then you should re-commission the node.
  - If MAAS doesn't detect an interface, or if it requires configuration MAAS can't handle, you can reconfigure the network in the deployed installation: Edit `/etc/netplan/50-cloud-init.yaml` and activate the changes with `sudo netplan apply`. (NetPlan configuration is described in more detail at <https://wiki.ubuntu.com/Netplan/Design>.)

- All disk devices (HDDs, SSDs, NVMeS, and DCPMMs) must be partitioned and mounted prior to testing. Each disk beyond the first one should ideally be configured with a single partition that spans the entire disk and that uses the ext4 filesystem.
  - As with network interfaces, the easiest way to do this is via MAAS before deployment.
  - If necessary, you can manually partition the disk (using `gdisk`, `fdisk`, `parted`, or similar tools), create filesystems on them (using `mkfs` or related tools), and mount them (with the `mount` command or `/etc/fstab` file).
- If the SUT has DCPMMs installed, you should configure them prior to running the test suite. **Note: This document assumes that the SUT will support Mixed Mode operation. If the SUT only supports a single operating mode at a time, you will need to configure DCPMMs in one mode, run tests, then re-configure the DCPMMs into the remaining mode and run the appropriate tests separately.**
- A MAAS installation configured for certification testing should provision the SUT with the Server Test Suite and related packages. If you're using a more "generic" MAAS setup, you'll have to install the certification software yourself, as described in Appendix A - Installing the Server Test Suite Manually.
- If the SUT includes an nVidia GPGPU that is to be tested, please refer to Appendix G - Setting Up and Testing a GPGPU.

## Setting Up the iperf3 Server

Before running the full certification test or any test run that involves network tests, you should ensure that your `iperf3` Target is properly configured. To do so, follow these steps:

1. On the `iperf3` Target, install the `certification-tools` package from the certification PPA. (This package should be installed by default when you install `maas-cert-server` version 0.3.7 or later; but you may need to install it manually if you're using another computer as your `iperf3` Target.)
2. On the `iperf3` Target, ensure that jumbo frames are configured on high-speed network interfaces (25 Gbps and faster). You can do this either temporarily or permanently:
  - To make a temporary change, type `sudo ip link set ens1f1 mtu 9000`, changing `ens1f1` to your high-speed network interface's name.

- With recent versions of Ubuntu, a permanent change is done by editing the configuration file in `/etc/netplan` (such as `/etc/netplan/01-netcfg.yaml`, although the exact name may differ). Locate the section for the high-speed network interface and add the line `mtu: 9000`. The result might look something like this, although several options may be different depending on your network configuration:

```
ens1f1:
  match:
    macaddress: 24:8a:07:a3:18:fc
  addresses: [ 172.24.124.1/22 ]
  dhcp4: false
  mtu: 9000
  optional: true
```

- Note that setting jumbo frames is not normally necessary on low-speed network interfaces, and in some cases jumbo frames can cause problems. Specifically, some EFI-based computers can't PXE-boot from a MAAS server's interface that's configured to use jumbo frames, and switches that don't support jumbo frames can cause problems, too, as described shortly. Thus, you should restrict this procedure to interfaces from which servers do *not* PXE-boot, if possible. If this is not possible and if you have problems PXE-booting computers, you may need to enable jumbo frames manually only when performing network tests that require this feature.
  - It's possible to configure the MAAS server to enable jumbo frames automatically on all nodes deployed on a particular network. Appendix B of the MANIACS guide describes how to configure MAAS in this way.
3. If `iperf3` is already running on the `iperf3` server, kill it.
  4. On the `iperf3` server, type `start-iperf3 -a 172.24.124.1 -n 10`, changing the IP address to the interface you want to bring up on the `iperf3` Target system and setting the `-n` option to the number of `iperf3` instances you want to run. The network test in Checkbox defaults to using one instance for every 10 Gbps of network throughput being tested, so you'll need at least `-n 4` to test a 40 Gbps NIC and `-n 10` to test a 100 Gbps NIC. You may find you'll need another value, though, as described in Appendix D - Network Performance Tuning. If in doubt, run more

`iperf3` instances than you think you'll need; the cost of running too many instances is very low. You can configure `iperf3` to start automatically by editing a startup script, such as `/etc/rc.local`. (The generic `/etc/rc.local` startup script is not enabled by default in recent versions of Ubuntu. Numerous online tutorials, such as this blog post, describe how to enable it.)

5. Repeat the preceding step for every other network interface that may be receiving `iperf3` connections.
6. You may need to enable jumbo frames on any switch(es) between the `iperf3` Target and the SUT. How to do this varies from one switch to another, so you must consult the switch's documentation. If a switch drops jumbo-frame traffic, the result can be a complete failure of communication between two computers configured to use jumbo frames.
7. If the SUT has high-speed network cards (faster than 10 Gbps), repeat steps 1 and 2 on the SUT.

You don't need to run all of these steps prior to each test run. Once an `iperf3` Target is properly configured, it should remain configured at least until it's rebooted; and if you set an MTU of 9000 in the NetPlan configuration and set the computer to automatically launch `iperf3` on reboot, then everything should come up properly after a reboot.

In some cases, additional network configuration steps may be required to further optimize performance. Appendix D - Network Performance Tuning describes these steps. If you run your tests and your network ports all pass, though, there's no need to consult this Appendix.

## Running the Certification Tests

You can initiate a testing session in a server as follows:

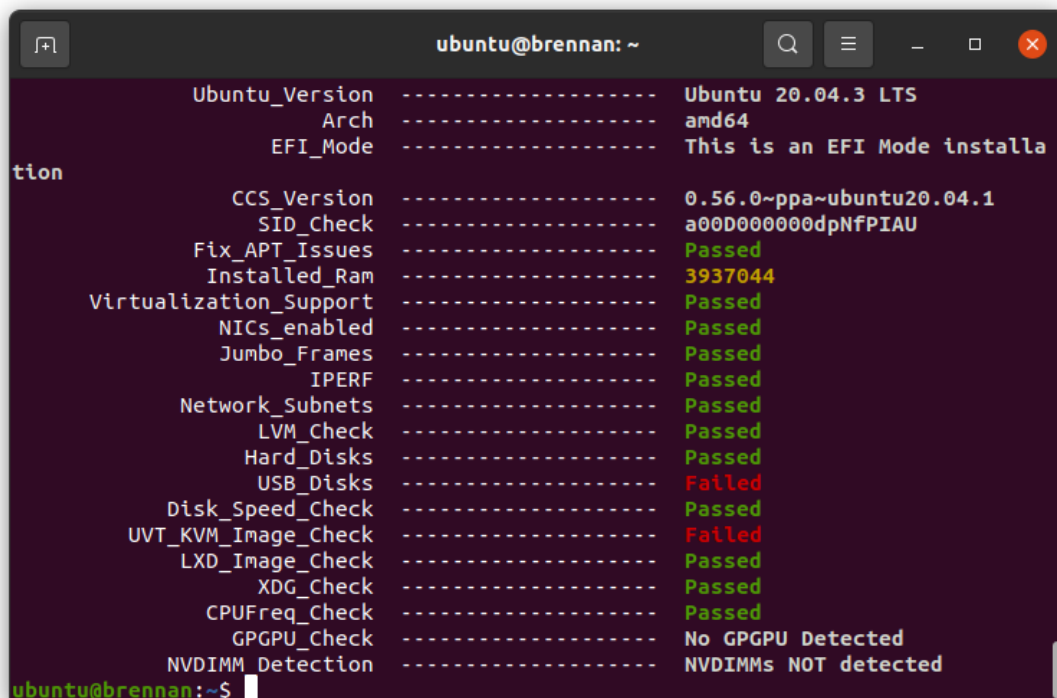
1. Connect to the SUT via SSH or log in at the console. A standard MAAS installation creates a user called `ubuntu`, as noted earlier. You can test using either a direct console login or SSH, but an SSH login may be disconnected by the network tests or for other reasons.
2. If the SUT provides the suitable ports and drives, plug in a USB 2 stick, plug in a USB 3 stick, plug in an SD card, and insert a suitable data CD in the optical drive. (Note that USB testing is not required for blade/cartridge style systems *unless* the blade or cartridge has dedicated USB ports that are not shared via the chassis.) These



media must remain inserted *throughout the test run*, because the media tests will be kicked off partway through the run.

3. run the `canonical-certification-precheck` script, which tests critical configuration details and fixes some common problems:

- The script completes APT configuration, which is sometimes incomplete at system installation.
- If the script detects that the `/etc/xdg/canonical-certification.conf` file is missing information, it will give you the opportunity to fill it in. This information includes the SUT's Secure ID (SID) number and pointers to KVM and LXD image files.
- Information on some critical configuration details is displayed, followed by a summary, such as the following:



```

ubuntu@brennan: ~
-----
Ubuntu_Version ----- Ubuntu 20.04.3 LTS
Arch ----- amd64
EFI_Mode ----- This is an EFI Mode installa
tion
CCS_Version ----- 0.56.0~ppa-ubuntu20.04.1
SID_Check ----- a00D000000dpNFPIAU
Fix_APT_Issues ----- Passed
Installed_Ram ----- 3937044
Virtualization_Support ----- Passed
NICs_enabled ----- Passed
Jumbo_Frames ----- Passed
IPERF ----- Passed
Network_Subnets ----- Passed
LVM_Check ----- Passed
Hard_Disks ----- Passed
USB_Disks ----- Failed
Disk_Speed_Check ----- Passed
UVT_KVM_Image_Check ----- Failed
LXD_Image_Check ----- Passed
XDG_Check ----- Passed
CPUFreq_Check ----- Passed
GPGPU_Check ----- No GPGPU Detected
NVDIMM_Detection ----- NVDIMMs NOT detected
ubuntu@brennan:~$
  
```

- Summary results are color-coded, with white for information, green for passed results, yellow for warnings, and red for problems that should be corrected. In

the preceding output, the Installed RAM value was displayed in yellow because the system's RAM is a bit shy of 4 GiB; the USB\_Disks line is red because no USB flash drive was inserted in the SUT; and the UVT\_KVM\_Image\_Check line is red because the KVM image was not configured. If your terminal supports the feature, you can scroll up to see details of any warnings or failures.

- If the script identifies any problems, be sure to correct them. Some common sources of problems include the following:
  - If the precheck script fails the NICs\_enabled test, you must correct the problem before testing. You must ensure that all network ports are cabled to a working LAN and configured as described earlier, in Performing Final Pre-Testing SUT Configuration.
  - If your IPERF test failed, you may need to launch the `iperf3` server on the Target system, as described earlier. Your configuration may need updating in addition to or instead of this change, though. To do so, edit the `/etc/xdg/canonical-certification.conf` file on the SUT so as to specify your `iperf3` server(s). For example:

```
TEST_TARGET_IPERF = 192.168.0.2,172.24.124.7
```

If your environment includes multiple `iperf3` servers, you can identify them all, separated by commas. The test suite will attempt to use each server in sequence until one results in a passed test or until a timeout period of one hour has passed. You can use this feature if your environment includes separate networks with different speeds or simply to identify all of your `iperf3` servers. (Note that `iperf3` refuses a connection if a test is ongoing, so you can list multiple `iperf3` servers and let the test suite try them all until it finds a free one.)

- If the Hard\_Disks or USB\_Disks options failed, you may need to attend to them. USB flash drives need only be prepared with FAT filesystems and inserted into the SUT, as described earlier. Most disks have device filenames of `/dev/sda`, `/dev/sdb`, and so on; but some disk devices may appear under other device names, such as `/dev/nvme*`. If `ls /dev/sd*` shows a disk with no partitions, you should partition the disk (one big disk-spanning partition is best), create an ext4 filesystem on it, and mount

it (subdirectories of /mnt work well). Repeat this process for each unmounted disk.

- If the UVT\_KVM\_Image\_Check or LXD\_Image\_Check tests failed and if your Internet access is slow, you should download the relevant virtualization images on the SUT:

1. On a computer with better Internet access, download KVM and LXD cloud image files from <http://cloud-images.ubuntu.com/focal/current/>. In particular, obtain the `focal-server-cloudimg-amd64.img`, `focal-server-cloudimg-amd64.squashfs`, and `focal-server-cloudimg-amd64-lxd.tar.xz` files, or the equivalent for your CPU architecture.
2. Copy those images to any convenient directory on the SUT.
3. Supply the full paths under the section labeled “environment” in `/etc/xdg/canonical-certification.conf`. For example:

```
[environment]
KVM_TIMEOUT = 300
KVM_IMAGE = /home/ubuntu/focal-server-cloudimg-amd64.img
LXD_ROOTFS = /home/ubuntu/focal-server-cloudimg-amd64.squashfs
LXD_TEMPLATE = /home/ubuntu/focal-server-cloudimg-amd64-lxd.tar.xz
```

Note that the KVM and LXD configurations are separated by several lines of comments in the configuration file.

A failure of the virtualization image precheck need not be a problem if your outside network access is good; the test script will attempt to obtain the virtualization image from public mirrors if it is not present locally.

4. If you’re running the test via SSH, type `screen` on the SUT to ensure that you can reconnect to your session should your link to the SUT go down, as may happen when running the network tests. If you’re disconnected, you can reconnect to your session by logging in and typing `screen -r`. This step is not important if you’re running the Server Test Suite at the console.
5. Run the certification tests by typing an appropriate command, such as:

```
$ certify-22.04
```

In some cases, though, another command may be necessary:

- If you're testing another Ubuntu version, you must change the version number.
  - More exotic options, including running a limited set of tests, are described in Appendix B - Re-Testing and Installing Updated Tests.
6. The full test suite can take several hours, or in extreme cases over a day, to complete, depending on the hardware configuration (amount of RAM, disk space, etc). During this time the computer may be unresponsive. This is due to the inclusion of some stress test cases. These are deliberately intensive and produce high load on the system's resources.
  7. If at any time during the execution you are *sure* the computer has crashed (or it reboots spontaneously) then after the system comes back up you should run the `certify-22.04` command again and respond `y` when asked if you want to resume the previous session.
  8. If any tests fail or do not run, a screen will appear that summarizes those tests that failed or did not run. The summary screen separates failures into two categories:
    - **Failed Jobs** — These failures *might* be serious, or they might not be. (This issue is addressed in more detail shortly.)
    - **Jobs with Failed Dependencies** — Failures in this category are *not* serious. A failed dependency means that a precondition for even running the test did not exist. For instance, in the below screen shot, a test intended for IBM Power-architecture (ppc64el) computers was not run because the SUT used an x86-64 CPU.

```

ubuntu@OB-05: ~
Select jobs to re-run

[ ] - Failed Jobs
[ ]   - Firmware tests
[ ]     Run FWTS Server Cert selected tests.
[ ]   - Informational tests
[ ]     installer_debug.gz
[ ]   - Miscellaneous tests
[ ]     Test DMI identification data (servers)
[ ]     miscellanea/olog_results.log
[ ]     Test that system booted with Secure Boot active
[ ]   - USB tests
[ ]     Test USB 2.0 or 1.1 ports
[ ]     Test USB 3.0 or 3.1 ports
[ ] - Jobs with failed dependencies
[ ]   - Miscellaneous tests
[ ]     Run FWTS OLOG check on ppc64el

Press (R) to Rerun selection, (F) to Finish (H) Help

```

You can use this opportunity to re-run a test if you believe it failed for a transient reason, such as if your `iperf3` server crashed or was unavailable or if you forgot to insert a USB drive. To re-run tests, use the arrow keys to highlight each test you want to re-run, press Spacebar to select it, and then press the **R** key to re-run the selected tests. If you don't want to re-run any tests, press **F** to finish.

9. When the test run is complete, you should see a summary of tests run, a note about where the `submission*` files have been stored, and a prompt to submit the results to C3. If you're connected to the Internet, typing `y` at this query should cause the results to be submitted. You will need either a Secure ID value or to have already entered this value in the `/etc/xdg/canonical-certification.conf` file. (The `canonical-certification-precheck` script will edit this file appropriately if you provided the SID when you ran that script.) The script will also prompt you for a description of the test run. This description is not shared publicly; it's intended to help both you and the Server Certification Team identify the purpose of a test run.
10. Copying the results files off of the SUT is advisable. This is most important if the automatic submission of results fails; however, having the results available as a backup can be useful because it enables you to review the results off-line or in case of submission problems that aren't immediately obvious. The results are stored in

the `~/ .local/share/checkbox-ng` directory. The upcoming section, [Manually Uploading Test Results to the Certification Site](#), describes how to upload results manually to C3.

You can review your results locally by loading `submission_<DATECODE>.html` in a web browser. This enables you to quickly spot failed tests because they're highlighted in red with a "failed" notation in the Result column, whereas passed tests acquire a green color, with the word "passed." Note, however, that *a failed test does not necessarily denote a failed certification*. Reasons a test might fail but still enable a certification to pass include the following:

- A test may be a non-blocking test, as described in the *Ubuntu Server Hardware Certification Coverage* document, available from <https://certification.canonical.com>. In the preceding screen shot, the Test That System Booted with Secure Boot Active is such a test.
- Some tests are known to produce occasional false positives — that is, they claim that problems exist when in fact they don't. In the preceding screen shot, the Run FWTS Server Cert Selected Test failure is an example of this condition.
- Some test environments are sub-optimal, necessitating that specific tests be re-run. This can happen with network tests or if the tester forgot to insert a removable medium. In such cases, the specific test can be re-run rather than the entire test suite. In the preceding screen shot, the failed USB tests are examples; the tests failed because no USB devices were inserted, which is an easily-corrected oversight.

Consult your account manager if you have questions about specific test results.

## Performing ISO Install Tests

Beginning with Ubuntu 22.04, tests must be performed to ensure that the SUT can be installed manually with physical installation media (optical discs or USB flash drives). (For purposes of this test, a BMC's virtual media support counts as "physical media.") These tests may be run before or after the bulk of the certification tests, as just described. Results are submitted in a similar way and those results must be referenced in the main submission, as described shortly. To perform these tests:

1. Download an Ubuntu installation image from <https://cdimage.ubuntu.com/releases/22.04/release/>. Be sure to retrieve the server install image (`ubuntu-22.04-live-server-amd64.iso` or a variant for your SUT's architecture).

2. Write the image to a bootable medium. There are several ways to do this, including:
  - You can use any optical disc burner program to write the image to a DVD+R or similar medium if the SUT has an optical drive. (Note that a CD-R is not large enough to hold the image; you must use a DVD-sized medium.)
  - You can use the Linux `dd` command to write the image to a USB flash drive, as in `sudo dd if=ubuntu-22.04-live-server-amd64.iso of=/dev/sdd status=progress`, changing `/dev/sdd` to whatever device file accesses your USB flash drive. (**WARNING: Specifying the wrong device file can wipe out a hard disk!**) Be sure the target disk is large enough to hold the image; it's about 1.4 GiB.
  - For information on creating a bootable USB drive from Windows or using GUI Linux tools, see the Burning ISO HOWTO.
  - To use the SUT's BMC to map the `.iso` file to a virtual medium, consult the SUT's documentation.
3. Prepare the SUT. For the most part, the SUT must be configured as described earlier, in *Configuring the SUT for Testing*; however, for this test, it must boot from the removable medium. This can be done on a one-time basis by using the computer's one-time boot option, as described shortly.
4. Insert the Ubuntu Live Server medium in the SUT or link the `.iso` image file as a virtual medium using the computer's BMC.
5. Acquire console access. This can be a physical keyboard and monitor connected directly to the computer or a remote KVM provided by the computer's BMC or a remote KVM device.
6. Power on (or reboot) the server.
7. At the appropriate point in the boot process, enter the computer's boot options menu. This is typically done by hitting F10, F12, Esc, or some other key at a critical point. The key to press is usually prompted when it becomes relevant. Consult the server's documentation for details. You can then select the boot medium for booting. The boot medium is usually (but not always) identified by brand name; for instance, an ADATA USB flash drive will be identified by that brand name. In some cases, two options appear for the boot medium, one of which includes the string "UEFI" and one of which doesn't. Select the "UEFI" option if it's present.

8. Install Ubuntu Live Sever. The Install Ubuntu Server Tutorial describes how to do this in detail. For the most part, you can install as described in that Tutorial and using whatever options are appropriate for your network; however, some items to which you may need to pay special attention include:

- At least one active network device is desirable for machine access and to transfer results from the SUT to C3; however, the ISO-install test does not explicitly test network connections. Therefore, you may opt to configure just one network device if that's convenient.
- Certification testing normally requires a "flat" (non-LVM) storage configuration; however, the ISO-install test does not test storage, so this requirement is waived for this test. The Live Server installation defaults to an LVM configuration. You can leave this as-is or change it, as you see fit.
- You can use any username and password you desire. Be sure to remember both so that you can log in.
- Installing the OpenSSH server is desirable if you want to access the server remotely; however, this capability is not required if you have physical access to the server, or access via a BMC's remote KVM functionality. If you do install the OpenSSH server, you will have the option to install remote access credentials from Launchpad or GitHub. Doing so will simplify access.
- When asked whether to install any of the "featured server snaps," leave them all de-selected; none are required.

9. When the installation is complete, reboot into the installed system and log in. You can log in at the console, remotely via a KVM, or remotely via SSH.

10. Install the Server Test Suite by typing the following commands:

```
$ sudo add-apt-repository ppa:checkbox-dev/ppa
$ sudo apt install canonical-certification-server
```

11. Type `test-iso-install`. This command runs the ISO-install test.

- You will be prompted for your password early in the test run. Enter it to proceed.
- The test should take about 2-5 minutes to run. At the end of the test run, you will be asked whether to submit test results. Respond Y to do so. You will then



be asked to enter a test description and the computer's SID value, as with a full test run.

- If the SUT has no direct Internet access, you can instead extract the test files and submit them from another computer, as described in the next section, [Manually Uploading Test Results to the Certification Site](#).
12. If you've already created a certificate request based on the main test run submission, you should locate that certificate request on C3 and add a note that points to the URL of the results you've just uploaded for the ISO-install test. If you have not yet submitted the machine's main results, you will have to create a Note linking to the ISO-install test after you submit those results. (See the upcoming section, [Requesting a Certificate](#), for information on that process, including attaching Notes to certificate requests.)

## Manually Uploading Test Results to the Certification Site

If you can't upload test results to the certification site from the certification program itself, you must do so manually, perhaps from another computer that runs Ubuntu. At this time, there is no mechanism for submitting results from an OS other than Ubuntu.

To submit results, you must first add the Hardware Certification PPA and install the `checkbox-ng` package. Follow these instructions:

1. Add the Hardware Certification PPA:

```
$ sudo add-apt-repository ppa:hardware-certification/public
$ sudo apt update
```

2. Install the package:

```
$ sudo apt install checkbox-ng
```

3. Run the following command:

```
$ checkbox-cli submit <SUT_SECURE_ID> <PATH_TO>/submission_<DATECODE>.tar.xz
```

where:

- `<SUT_SECURE_ID>` can be found on your system's page on the certification web site (<http://certification.canonical.com>) by looking next to "Secure ID for testing purposes":

## System 201601-20487

Secure ID for testing purposes: `a00D000000fe68DIAQ`

- `<PATH_TO>` refers to the location of the `submission_<DATECODE>.tar.xz` file (which should be contained in the `~/local/share/checkbox-ng` directory you copied to the USB key).
- `<DATECODE>` is a date code. Note that if you re-run the certification suite, you're likely to see multiple `submission_<DATECODE>.xml` files, each with a different date code, one for each run. Ordinarily, you should submit the most recent file.

You should see output similar to the following for a successful submission:

```
$ checkbox-cli submit a00D000000XndQJIAZ \  
~/local/share/checkbox_ng/submission_2016-03-23T19\ :06\ :18.244727.xml  
Successfully sent, submission status at  
https://certification.canonical.com/submissions/status/28d85e09-11d4
```

Once results submission is complete, use the provided link in the output to review the results and confirm that they are correct.

## Requesting a Certificate

Once you've uploaded the data to the certification site, you should review it in the web interface. If you're satisfied that there are no problems, you can request a certificate:

1. Click the date link under the Created column in the Submissions section. The result should be a page showing most of the same information as the previous page, but in a different format, and restricted to that one test run.
2. Click the Request Certificate link. The result should be a page with a few radio buttons in which you can enter information:
  - Status is fixed at In Progress.

- Certified Release indicates the Ubuntu release used for testing, and for which the certificate will be issued.
  - Level indicates the type of certification:
    - Certified is for hardware that's ready to be deployed with Ubuntu. This is the option to choose for server hardware as that typically does not ship with a pre-installed operating system.
    - Certified Pre-install is for hardware that ships with a (possibly customized) version of Ubuntu. This option is used almost exclusively for Client hardware such as desktops and laptops that typically ship with a pre-installed operating system.
  - Is Private should be checked if the certification should be kept private. Note that this check box affects the certificate only, not the entry for the computer as a whole on <http://certification.canonical.com>. Other public pre-existing certificates, or those issued in the future, will remain public.
3. Click Submit. You'll see a new screen in which you can enter more information. In particular, you can click:
- Link Bug to link to a bug on <https://bugs.launchpad.net>. This option is available only to Canonical engineers.
  - Create Note or Add Note from Template to create a note. Most systems will have at least two notes:
    - A note titled "Requester" with the name of the person who requested the certificate is required. This note should be created automatically, but you may optionally modify it.
    - A note titled "Test Notes" is usually present. It describes test-specific quirks, such as why a failure should be ignored (say, if a network test failed because of local network problems but succeeded on re-testing). If the *miscellanea/get-maas-version* test fails, be sure to specify the version of MAAS used to deploy the SUT.
- In most cases, the "Private" check box should be checked for your notes.

## Appendix A - Installing the Server Test Suite Manually

Ordinarily, MAAS will install the Server Test Suite onto the SUT as part of the provisioning process. If the MAAS server is not configured to do this, you may use APT to do the job after deploying the SUT. In order to do this, your lab must have Internet access or a local APT repository with both the main Ubuntu archives and the relevant PPAs. You can install the necessary tools using `apt-get`.

Log in to the server and run the following commands:

```
$ sudo add-apt-repository ppa:hardware-certification/public
$ sudo add-apt-repository ppa:firmware-testing-team/ppa-fwts-stable
$ sudo apt update
$ sudo apt install canonical-certification-server
```

If you want to run the test suite from an Ubuntu live medium, you must also enable the universe repository:

```
$ sudo add-apt-repository universe
```

Note that running the test suite from a live medium is not accepted for any certification attempt; this information is provided to help in unusual situations or when debugging problems that necessitate booting in this way.

During the installation, you may be prompted for a password for `mysql`. This can be set to anything you wish; it will not be used during testing. You may also be prompted to configure the Postfix mail server. Selecting **No configuration** is appropriate.

At this point, the test suite and dependencies should be installed.

## Appendix B - Re-Testing and Installing Updated Tests

Occasionally, a test will fail, necessitating re-testing a feature. For instance, if a USB flash drive is defective or improperly prepared, the relevant USB tests will fail. Another common source of problems is network tests, which can fail because of busy LANs, flaky switches, bad cables, and so on. When this happens, you must re-run the relevant test(s). Broadly speaking, there are two ways to re-run tests: via a limited test script and by installing updated test scripts.

### Running a Limited Test Script

In addition to the `certify-22.04` test script, several others are provided with the Server Test Suite:

- If you're testing a System-on-Chip (SoC) rather than a production server, you should run `certify-soc-22.04`.
- If you're testing a virtual machine, you should run `certify-vm-22.04`.
- The `test-firmware` command runs firmware tests.
- The `test-functional-22.04` command runs functional tests.
- The `test-gpgpu` command runs tests on nVidia GPGPUs. (See Appendix G - Setting Up and Testing a GPGPU for important information related to GPGPU testing.)
- The `test-memory` command runs memory tests.
- The `test-network` command runs network tests.
- The `test-network-underspeed` command runs the network tests with the speed check disabled. This is helpful in situations where a network device reports an incorrect maximum speed.
- The `test-nvdim` command will run the memory and storage focused tests and some NVDIMM health checks. This launcher is intended for testing NVDIMMs configured in mixed mode. (See [Configuring DCPMM Devices for Testing](#) for more information.)
- The `test-storage` command runs tests of storage devices.
- The `test-stress` command runs CPU, RAM and storage stress tests.
- The `test-usb` command runs tests of USB ports.

- The test-virtualization command runs virtualization (KVM and LXD) tests.

If you're testing NVDIMMs alone, you should note that `test-nvdim` will run both memory and storage stress tests and thus will take a while to run. If your NVDIMMs are configured only in memory or storage mode you can save some time by using the `test-memory` or `test-storage` launchers respectively.

If you're testing Ubuntu 20.04, change the version number in commands that include it. Consult your Partner Engineer if you need help deciding which of these tests to run.

When the test run completes, submit the test result in the same way you would for a complete test run. You can then request a certificate based on the main results (the one with the most passed tests) and refer to the secondary set of results in the certificate notes. This procedure ensures that all the necessary data will be present on C3.

## Installing and Running Updated Tests

From time to time, a test will be found to contain a bug or need to be updated to deal with a problem. In such cases, it is often impractical to wait for the fix to work its way down through Ubuntu's packaging system, or even through the PPAs in which some of the relevant tools are distributed. In such cases, the usual procedure for replacing the script or file is as follows:

1. Consult with the Server Certification Team about the problem; *do not* install an updated script from some other source!
2. Obtain the updated file (typically a script) from the Server Certification Team. Store it on the SUT in the home directory of the test account. For instance, the new script might be `/home/ubuntu/newscript`. If necessary, give the new file execute permissions.
3. On the SUT, rename or delete the original file, as in:

```
$ sudo rm /usr/lib/checkbox-provider-base/bin/oldscript
```

4. Create a symbolic link from the new script to the original name, as in:

```
$ sudo ln -s /home/ubuntu/newscript \  
/usr/lib/checkbox-provider-base/bin/oldscript
```

5. Run the tests again, using the `canonical-certification-server` user interface.

In some cases, another procedure might be necessary; for instance, a bug fix might require installing a new Debian package with the `dpkg` command, or you might need to edit a configuration file. The Canonical Server Certification Team can advise you about such requirements.

## Appendix C - Testing Point Releases

Ubuntu LTS releases are updated to a new *point release* version approximately three months after each intervening release — that is, 20.04.1 was released in August of 2020 (about three months after 20.04), 20.04.2 was released in February of 2021 (three months after 20.10), and so on. A similar progression will occur with Ubuntu 22.04. These updates use the kernels from the latest interim release, which can affect hardware compatibility; however, the new kernels are supported for a limited period of time compared to the GA kernel. Therefore, certification can involve testing multiple Ubuntu releases or Linux kernels:

- The GA release — That is, the version that was released in April of the release year (2020 for 20.04, 2022 for 22.04). Ubuntu 20.04 shipped with a 5.4.0-series kernel, and 22.04 shipped with a 5.15.0-series kernel.
- The current point release — That is, version 20.04.4, or whatever is the latest release in the series. Testing point-release versions starting with the .2 point release in addition to the original GA version serves as a check for regressions in the kernel, and may be required if the GA kernel doesn't work on a SUT.

In theory, compatibility will only improve with time, so a server might fail testing with the original GA kernel because it uses new hardware that had not been supported in April of the OS release year, but pass with the latest kernel in a subsequent point-release. Such a server would be certified for that latest version, but not for the original GA release. If such a situation arises, testing may also be done with intervening kernels so as to determine the earliest working version of Ubuntu.

If a server fails certification with a more recent kernel but works with an earlier one, this situation is treated as a regression; a bug report should be filed and note made of the problem in the certificate request. Please notify your PE about such problems to facilitate their resolution.

Because x.04.1 releases use the same kernel series as their corresponding GA releases, testing with x.04.1 point releases is not required.

If you have problems controlling the SUT's kernel version or installing particular point releases, then you should consult the Server Certification Team.



## Appendix D - Network Performance Tuning

Network devices can pose problems for testing because of improper configuration. A few steps can help work around such problems. In particular, care must be paid to the configuration of high-speed network devices. In some rare cases, disabling Energy Efficient Ethernet settings may have beneficial effects, too.

### Improving High-Speed Network Performance

Ubuntu's default network configuration works fine for most 1 Gbps and 10 Gbps network devices; however, most servers require a little tweaking of settings to perform adequately at higher speeds. The `iperf3` Target setup procedure described earlier, in [Setting Up the iperf3 Server](#), configures most of the relevant options; however, in some cases you may need to further tweak the network settings.

The procedure outlined in [Setting Up the iperf3 Server](#) configures the `iperf3` Target system to run multiple `iperf3` instances. The reason for doing this is that a single `iperf3` thread tends to max out the CPU at some level of throughput — somewhere between 10 Gbps and 20 Gbps using the servers in our test lab. This value may be different on other hardware, though. If either an `iperf3` server or a SUT has less-powerful CPUs, more `iperf3` instances may be required; and fewer may be optimal if a CPU is more powerful. If you suspect your network tests are failing for this reason, you can adjust the `-n` value in your `start-iperf3` command and then run the network script manually on the SUT, specifying the number of `iperf3` instances it launches via the `--num-threads` option, as in:

```
sudo /usr/lib/checkbox-provider-base/bin/network.py test -i ens1f1 \  
-t iperf --iperf3 --scan-timeout 3600 --fail-threshold 80 \  
--cpu-load-fail-threshold 90 --runtime 900 --num_runs 4 --num-threads 20 \  
--target 172.24.124.1
```

This example sets the number of `iperf3` instances to 20. You must adjust the `-i` option for the SUT's interface and the `--target` value to point to the `iperf3` Target. Of course, the `iperf3` Target must also be running at least the specified number of instances. If this procedure produces acceptable results, you will need to append the *exact* command you used and the output of the run to the test result submission in a note.

If you can't get adequate performance by setting jumbo frames and using multiple `iperf3` instances, you may need to tweak additional network settings. This can be done with the

`optimize-network` script, which is provided by the `certification-tools` package. This script takes the name of the network interface as a required argument, using `-i` or `--interfaces`, as in:

```
sudo optimize-network -i ens1f1
```

You may need to run this script on the `iperf3` Target, on the SUT, or both. Be sure you do *not* reboot between running the script and running your network tests, since the configuration changes will not survive a reboot.

In extreme cases, additional configuration tweaks may be required. The full procedure is documented at <https://certification.canonical.com/cert-notes/network-tuning/>.

## Disabling Energy Efficient Ethernet Settings

The Energy Efficient Ethernet (EEE; sometimes also called Green Ethernet) option is intended to save power in various ways. This feature can be present on network devices of any speed. Usually, it works fine; however, in some rare cases, enabling EEE can cause dropped packets and other problems. You can check a network device's EEE settings with the following command (adjusting the network device name as appropriate):

```
ethtool --show-eee eno1
EEE settings for eno1:
  EEE status: enabled - active
  Tx LPI: disabled
  Supported EEE link modes: 100baseT/Full
                           1000baseT/Full
  Advertised EEE link modes: 100baseT/Full
                             1000baseT/Full
  Link partner advertised EEE link modes: 100baseT/Full
                                           1000baseT/Full
```

This example shows that EEE is enabled and active on `eno1`, as shown on the second line of output. Other possible configurations include enabled but inactive (which happens when Ubuntu has enabled the feature but the switch doesn't support it); disabled (when it's disabled on the SUT); and unsupported (when the device doesn't support EEE).

If you suspect that EEE is causing network test failures, you should first check to be sure it's enabled and active. If so, you can disable it with the following command (adjusting the device name, of course):

```
sudo ethtool --set-eee eno1 eee off
```

If it's successful, the command will produce no output. You can verify its success by re-issuing the `ethtool --show-eee eno1` command.

Problems caused by EEE are extremely rare, so it's unlikely you'll need to resort to these procedures.

## Appendix E - Troubleshooting

### Fixing Deployment Problems

Sometimes a node fails to deploy. When this happens, check the installation output on the node's MAAS page. (Click the Logs tab and then click Installation Output.) Often, a clue to the nature of the problem appears near the end of that output. If you don't spot anything obvious, copy that output into a file and send it to the Server Certification Team.

One common cause of deployment problems is IP address assignment issues. Depending on your MAAS configuration and local network needs, your network might work better with DHCP, Auto Assign, or Static Assign as the method of IP address assignment. To change this setting, you must first release the node. You can then click the Network tab on the node's summary page in MAAS and reconfigure the network options by using the Actions field, as described earlier, in Installing Ubuntu on the System.

If, when you try to deploy a GA kernel, MAAS complains that the kernel is too old, try this:

1. Click the node's *Configuration* tab in MAAS.
2. Click *Edit* under *Machine Configuration*.
3. In the *Minimum Kernel* radio button, select *No Minimum Kernel*.
4. Click *Save Changes*.
5. Try to re-deploy.

### Adding PPAs Manually

Sometimes you may need to add a PPA manually. In order for this to work, your SUT must be able to reach the internet and more specifically reach `launchpad.net`. If either of those requirements are not met, you will receive a somewhat confusing message like this:

```
ubuntu@ubuntu:~$ sudo add-apt-repository ppa:hardware-certification/public
Cannot add PPA: 'ppa:hardware-certification/public'.
Please check that the PPA name or format is correct.
```

To resolve this, ensure that your SUT can reach the internet and can reach `launchpad.net` directly.

## Submitting Results

If submitting results from the Server Test Suite itself fails, you can use the `checkbox-cli` program, as described earlier, in [Manually Uploading Test Results to the Certification Site](#). You can try this on the SUT, but if network problems prevented a successful submission, you may need to bring the files out on a USB flash drive or other removable medium and submit them from a computer with better Internet connectivity.

## Resolving Network Problems

Network problems are common in testing. These problems can manifest as complete failures of all network tests or as failures of just some tests. Specific suggestions for fixing these problems include:

- **Check cables and other hardware** — Yes, this is very basic; but bad cables can cause problems. For instance, one bad cable at Canonical resulted in connections at 100 Mbps rather than 1 Gbps, and therefore failures. Some of these failures were identified in the output as the lack of a route to the host. Similarly, if a switch connecting the SUT to the `iperf3` server is deficient, it will affect the network test results.
- **Use the simplest possible network** — Complex network setups and those with heavy traffic from computers uninvolved in the testing or those with multiple switches, bridges, etc., can create problems for network testing. Simplifying the network in whatever way is practical can improve matters.
- **Check firewall settings** — Successful deployments may require access to several network sites. These include repositories at `archive.ubuntu.com` (or a regional mirror), Ubuntu's PPA site at `ppa.launchpad.net`, and Ubuntu's key server at `keyserver.ubuntu.com`. (You may instead use local mirrors of the archive and PPA sites.) If your site implements strict outgoing firewall rules, you may need to open access to these sites on ports 80 and/or 443.
- **Check the `iperf3` server** — Ensure that the server computer is up and that the `iperf3` server program is running on it. Also ensure that the computer has no issues, such as a runaway process that's consuming too much CPU time.
- **Verify the `iperf3` server is not overworked** — The `iperf3` server program refuses connections if it's already talking to another client. Thus, a SUT may fail its network test if the `iperf3` server is already in use. You may need to re-run the network tests

on one or more SUTs if this is the case. Note that a faster `iperf3` server (say, one with a 10 Gbps NIC used to test 1 Gbps SUTs) requires special configuration to handle multiple simultaneous connections, as described in the MANIACS guide.

- **Ensure the `iperf3` server is on the SUT's local network** — The network tests temporarily remove the default route from the routing table, so the `iperf3` server must be on the same network segment as the SUT.
- **Check the SUT's network configuration** — A failure to configure the network ports will cause a failure of the network tests. Likewise, a failure to bring up a network interface before testing will cause the test to fail, even if the Server Test Suite detects the interface.
- **Check your DHCP server** — A sluggish or otherwise malfunctioning DHCP server can delay bringing up the SUT's network interfaces (which repeatedly go down and come up during testing). This in turn can cause network testing failures.

If you end up having to re-run the network tests, you can do so as described earlier, in Appendix B - Re-Testing and Installing Updated Tests.

## Fixing Virtualization Test Problems

Virtualization tests can fail for a number of reasons. If these tests fail, you should first try these diagnostic or corrective actions:

- Type `sudo apt install -f` on the SUT. This command repairs some package installation problems, which can sometimes cause the KVM test to fail.
- Check your virtualization image sources, as described in Running the Certification Tests. Note that you may need to check the configuration on the SUT (in `/etc/xdg/canonical-certification.conf`) and on whatever server you use to host your virtualization images.
- If you're *not* hosting virtualization images locally, be aware that the virtualization tests will try to download images from the Internet. In this case, you must ensure that the SUT has Internet access.

You can run the virtualization tests alone by typing `test-virtualization` on the SUT.

## Handling Secure Boot MOKs

Although most Ubuntu components, such as GRUB, the Linux kernel, and standard Linux kernel modules, are cryptographically signed with Canonical's key, some third-party and specialized modules (notably including some used by the firmware test suite, or fwts) are not so signed. To use such modules, they must be signed with a machine owner key (MOK), which is stored in the computer's NVRAM; and to store the MOK, UEFI Secure Boot policy requires manual boot-time approval. Thus, if the computer is deployed with Secure Boot active and certain packages are updated via apt, the apt program will prompt for a password and, upon reboot, the computer's console will display a prompt to enter a password, and the MOK will be added only if the password matches the one you entered as part of the apt package update. The prompt at reboot has no timeout, so if you can't see the console, the reboot will fail.

If console access is not available, it's best to configure computers with Secure Boot disabled; however, as a general rule, we encourage use of Secure Boot so as to ensure that this feature works. "Console access" can be via a remote KVM or even IPMI SoL. Enabling and disabling Secure Boot generally requires this access, too.

Repeatedly deploying a server with Secure Boot active may result in the accumulation of multiple MOKs in the computer's NVRAM. In theory, these could grow to consume enough space in the NVRAM to cause problems. Typing `sudo mokutil --reset` at an Ubuntu console will cause all the MOKs to be deleted; however, this will cause kernel modules signed with a MOK to fail to load. It's best to use this command just prior to releasing a node.

## Handling Miscellaneous Issues During Testing

The testing process should be straightforward and complete without issue. Should you encounter problems during testing, please contact your account manager. Be sure to save the `~/ .local/share/checkbox-ng` and `~/ .cache/plainbox` directory trees as they will contain logs and other data that will help the Server Certification Team determine if the issue is a testing issue or a hardware issue that will affect the certification outcome.

If possible, please also save a copy of any terminal output or tracebacks you notice to a text file and save that along with the previously-noted directories. (Feel free to send us a photo of the screen taken with a digital camera.)

## Appendix F - Using SoL

Many servers support *serial-over-LAN (SoL)*. When configured in this way, the server mirrors its console output to a serial port device, which in turn is intercepted by the BMC and made accessible to you. Using SoL may be helpful when a server fails to enlist, commission, or deploy; or sometimes even if it works correctly but you need to adjust its firmware settings remotely or obtain a record of early boot messages.

The details of SoL configuration vary from one server to another. Broadly speaking, you must do three things:

1. Identify (and possibly set) console redirection options in the firmware. If the computer ships with SoL options active by default, this may not be necessary except in service of the next step.
2. Set kernel options to redirect kernel output to the correct serial device. This step is required only if you need to access Linux kernel messages or the login console remotely.
3. Access the server from another computer by using `ipmitool` or a similar utility.

### Setting Firmware Options

Console access settings are typically set in the firmware setup utility, often under a menu option called “Advanced” and a sub-option called “Console Redirection” or “Remote Access.” You must typically specify the serial port device, which is usually described in DOS form, such as COM1 or later, as well as serial port settings such as bit rate (115,200, 57,600, or similar), flow control, and a terminal type. You can set these options to whatever you like, but you must remember what the settings are, at least if you want to use SoL once the Linux kernel has gained control of the computer, because you must replicate these settings to use SoL after the kernel has taken over.

### Setting Kernel Options

If you want to use SoL with the Linux kernel, you must replicate the settings you discovered or set in the firmware as options passed to the Linux kernel by the boot loader. The options will look something like this:

```
console=tty1 console=ttyS2,115200n8
```



The first `console=` option tells the computer to continue using its main screen (`tty1`); the second one tells it to use a serial port device (`ttys2` in this example), as well, and specifies the speed and other serial port options. Note that the firmware's COM1 equates to `ttys0` in Ubuntu, COM2 becomes `ttys1`, and so on. Thus, this example tells the kernel to use what the firmware calls COM3, at 115,200 bps, no parity, and 8 bits.

Once you know what kernel parameters you need to provide, there are three ways to pass them to the kernel:

- **Setting post-deployment kernel options** — If Ubuntu is already installed, you can modify GRUB to pass the relevant options to the node in question. You can do this as follows:

1. Open `/etc/default/grub` on the node in a text editor.
2. Set the `GRUB_CMDLINE_LINUX_DEFAULT` and `GRUB_CMDLINE_LINUX` lines to resemble the following, making changes as described earlier:

```
GRUB_CMDLINE_LINUX_DEFAULT="console=tty1 console=ttys2,115200n8"
GRUB_CMDLINE_LINUX="console=tty1 console=ttys2,115200n8"
```

3. Type `sudo update-grub` to update the GRUB configuration file, `/boot/grub/grub.cfg`.
  4. Reboot to activate these changes.
- **Setting per-node kernel options** — If Ubuntu is not yet installed, you can add the kernel command line options to a single node by following these instructions:

1. On the MAAS server, type:

```
$ maas admin tags create name='SoL-ttyS2-115200' comment='SoL ttyS2 115200' \
kernel_opts='console=tty1 console=ttys2,115200n8'
```

Change the kernel options for your node as noted earlier. (You can change the name and comment, too.) Note that this command assumes you set up the MAAS server using the `maniacs-setup` script; if you used some other way, you may need to register a login via the `maas login admin` command, which takes a MAAS URL and API key as options; or use an existing MAAS CLI account name other than `admin`, as specified in this example.

2. Using the MAAS web UI, go to the node's summary page, click Edit, and apply the SoL-`ttyS2-115200` tag to the node you want to deploy in this way. Note that you can define multiple tags that set different options, such as options for nodes that use different serial ports or bit rates, and apply different tags to different nodes.
  3. Commission or enlist the node. It should then use the SoL options you've just specified. Note that this procedure will not help you if you're having difficulties enlisting a node, since you can apply a tag to a node only after the node has enlisted.
- **Setting global kernel options** — If Ubuntu is not yet installed, you can add the kernel command line options to the Global Kernel Parameters area in the MAAS settings page (<http://localhost:5240/MAAS/settings/>). **WARNING:** This action will apply these settings to *all* the nodes you subsequently enlist, commission, or deploy! Unless they're all configured to use SoL with the same options, the result can be enlistment, commissioning, and deployment failures on the nodes that are not configured to use SoL or that are configured with different settings! Thus, you should use this option only for a brief period when debugging enlistment, commissioning, and deployment problems — and commissioning and deployment problems are better handled using per-node kernel options, as described in the previous bullet point.

## Remotely Accessing a Server's Console

Once SoL is configured, you can access a node via the `ipmitool` utility in Ubuntu, or similar tools in other environments. For instance:

```
ipmitool -H 172.24.124.253 -I lanplus -U maas -P 2TR2Rssku sol activate
```

This example accesses the node whose BMC is at 172.24.124.253, using the `lanplus` (IPMI v2.0) protocol, a username of `maas`, and a password of `2TR2Rssku`. You may use the same username and password that MAAS uses, or any other that exist on the BMC with sufficient privileges.

If you power on the node, you should see its firmware startup messages, possibly followed by a GRUB menu, kernel startup messages, and subsequent Ubuntu startup messages. If this is a normal post-deployment boot, these will culminate in a `login:` prompt. You should be able to use the SoL session to enter the firmware setup utility

early in the process, or to log in to Ubuntu once deployment is complete. There are limitations to using SoL; for instance, you must use special escape key sequences to enter some keyboard characters. (See the `ipmitool` documentation for details.)

# Appendix G - Setting Up and Testing a GPGPU

## Requirements for GPGPU testing

- SUT prepared for testing as described in this document
- nVidia GPGPU(s) installed in SUT
  - At this time, only nVidia GPGPUs are supported for Certification Testing.
- Internet connection
  - The SUT must be able to talk to the Internet in order to download a significant number of packages from the nVidia repositories.
- Installation of the `checkbox-provider-gpgpu` package — type `sudo apt install checkbox-provider-gpgpu` after deploying the node. This package is installed from the Certification PPA, which should be enabled when you deployed the node or installed Checkbox manually.

## Setting Up a GPGPU for Testing

New tests cases have been added to test that nVidia GPGPUs work with Ubuntu. With this addition, GPGPUs can be certified on any Ubuntu LTS Release or Point Release starting with Ubuntu 18.04 LTS using the 4.15 kernel.

The tool to set up the GPGPU environment for testing is included in the `checkbox-provider-certification-server` package and is installed any time the Server Certification suite is installed on a SUT for testing.

To set up the GPGPU you simply need to do the following:

```
sudo gpu-setup.sh
```

This will add the nVidia repo and GPG key to the Ubuntu installation on the SUT, update the Apt cache and install the Cuda Toolkit and appropriate nVidia drivers for the GPGPUs installed in the SUT. It will also download the source for a tool called `gpu-burn`, an open source stress test for nVidia GPGPUs. Then the script will compile the `gpu-burn` tool and exit.

Once the script is complete, you must reboot the SUT to ensure the correct nVidia driver is loaded.

## GPGPUs that use NVLink

Some nVidia GPGPUs, such as the V100-SXM3, use NVLink for inter-device communication, rather than passing messages across the PCIe bus. Devices that use NVLink require a little extra configuration before they can be properly tested. The following are the general steps to configure NVLink for nVidia GPGPUs. Documentation and downloads for nVidia's Data Center GPU Manager can be found at <https://developer.nvidia.com/dcgm/>

All steps below should be done as the root user.

1. Install the correct management tooling (note the Version may be different due to updates from nVidia)
  - For stand-alone GPGPUs install `datacenter-gpu-manager_1.7.1_amd64.deb`
  - For DGX-2 and HGX-2 systems, install `datacenter-gpu-manager-fabricmanager_1.7.1_amd64.deb`
2. Set up persistence mode (this shows setting mode for 16 GPGPUs in a chassis):

```
# for x in `seq 0 15`; do nvidia-smi -i $x -pm 1; done
```

3. Set up a group:

```
# dcgmi group -c GPU_Group  
# dcgmi group -l
```

4. Discover GPUs:

```
# dcgmi discovery -l
```

5. Add GPUs to group:

```
# dcgmi group -g 1 -a 0,1,2,3,4,5,6,7,8,9,10,11,12,13,14,15  
# dcgmi group -g 2 -i
```

6. Set up health monitoring:

```
# dcgmi health -g 1 -s mpi
```

7. Set persistence for all GPUs:

```
# for x in `seq 0 15`; do nvidia-smi -i $x -pm 1; done
```

8. Run the diag to check:

```
# dcgmi diag -g 2 -r 1
```

At this point, NVLink should be configured and ready to go. You can also test this by quickly running one of the nVidia sample tests such as the one found in `/usr/local/cuda-10.2/samples/1_Uutilities/p2pBandwidthLatencyTest`

## Testing the GPGPU(s)

To test the GPGPU, you only need to run the `test-gpgpu` command as a normal user, much in the same manner as you run any of the `certify-*` or `test-*` commands provided by the `canonical-certification-server` package.

Running `test-gpgpu` will execute `gpu-burn` for approximately 30 minutes to 1 hour against all discovered GPGPUs in the SUT in parallel. Once testing is complete, the tool will upload results to the SUT's Hardware Entry on the Certification Portal. You do not need to create a separate certificate request for GPGPU test results, simply add a note to the certificate created from the main test results with a link to the GPGPU submission and the certification team will review them together.